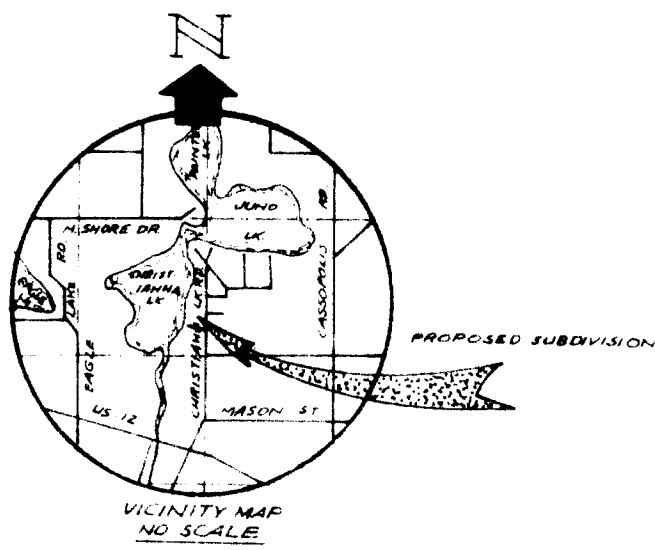


PROPOSED

WAGON WHEEL ESTATES NO. 1

A SUBDIVISION OF PART OF THE SOUTHEAST FRACTIONAL QUARTER OF FRACTIONAL SECTION 1, T.8 S., R.15 W., ONTWA TOWNSHIP, CASS COUNTY, MICHIGAN.



E 1/4 Corner Section 1, T.8 S., R.15 W.

PRELIMINARY DESCRIPTION

THAT PART OF THE SOUTHEAST FRACTIONAL QUARTER OF FRACTIONAL SECTION 1, T.8 S., R.15 W., ONTWA TOWNSHIP, CASS COUNTY, MICHIGAN, DESCRIBED AS, FROM THE SOUTHEAST CORNER OF SECTION 1, MEASURE, NORTH ALONG THE EAST LINE OF SAID SECTION, 1094.74 FEET TO THE POINT OF BEGINNING OF THE LAND HEREIN DESCRIBED; THENCE, N 78°09'00" W, ALONG THE NORTHERLY LINE OF TWILIGHT STREET, 773.22 FEET; THENCE, N 23°40'18" E, 160 FEET; THENCE, S 78°09'00" E, 530 FEET; THENCE, NORTH, 700 FEET; THENCE, N 89°47'00" E, 50.00 FEET; THENCE, NORTH, 216 FEET; THENCE, N 89°47'00" E, 127.00 FEET; 72. THE EAST LINE OF SAID SECTION; THENCE, SOUTH ALONG SAID EAST LINE, 1122.58 FEET TO THE POINT OF BEGINNING.

PROPRIETOR:-
LAVERNE SOALES
EAST SIDE CLEAR LAKE
BUCHANAN, MICHIGAN. 49107

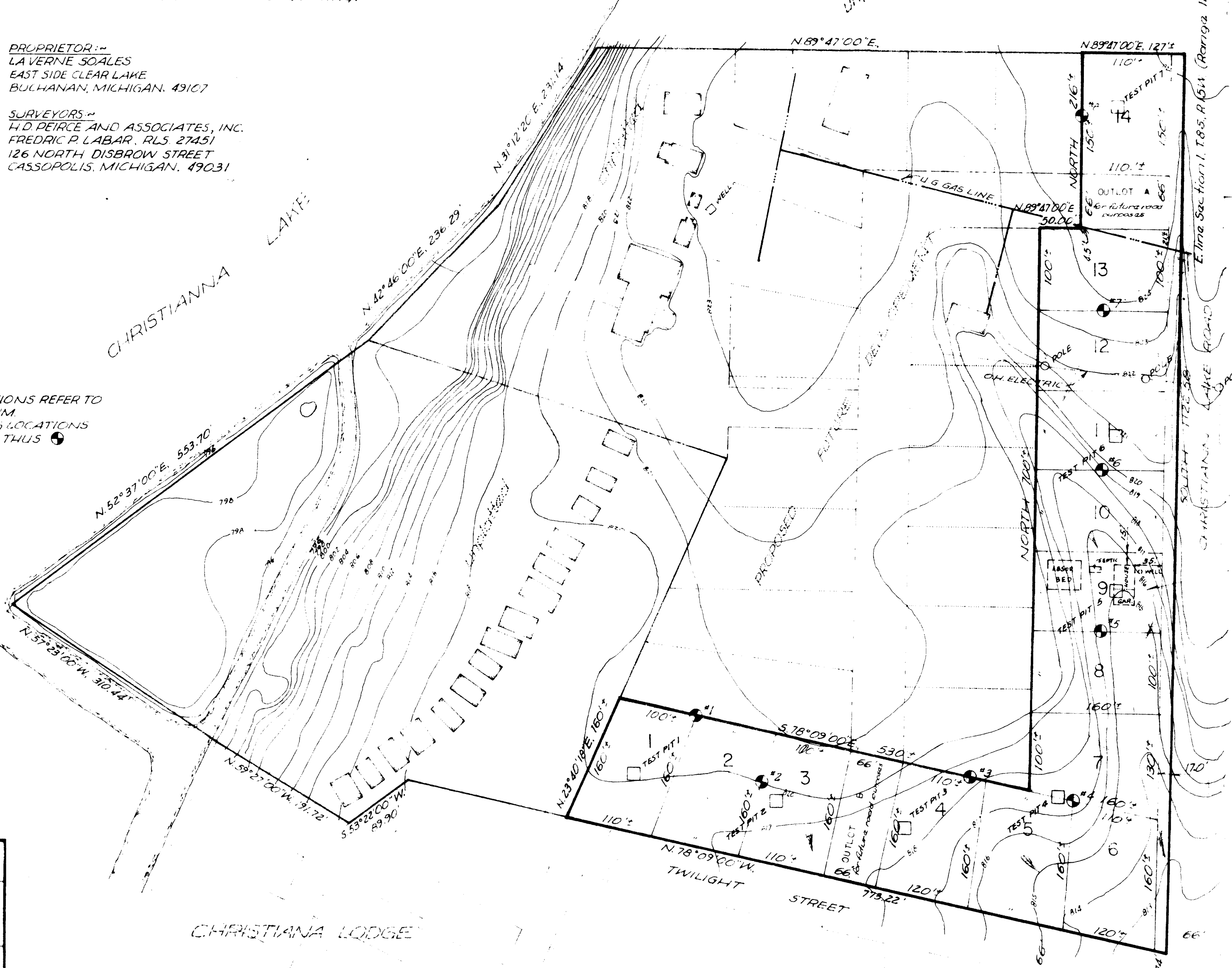
SURVEYORS:-
H.D. PEIRCE AND ASSOCIATES, INC.
FREDRIC P. LABAR, RLS 27451
126 NORTH DISBROW STREET
CASSOPOLIS, MICHIGAN. 49031

SOIL BORINGS	
HOLE NO.	SOIL
1	CLAY SAND
2	CLAY SAND
3	CLAY SAND
4	CLAY SAND
5	CLAY SAND
6	CLAY SAND
7	CLAY SAND
8	CLAY SAND
9	CLAY SAND
10	CLAY SAND
11	CLAY SAND
12	CLAY SAND
13	CLAY SAND
14	CLAY SAND
15	CLAY SAND
16	CLAY SAND
17	CLAY SAND
18	CLAY SAND
19	CLAY SAND
20	CLAY SAND
21	CLAY SAND
22	CLAY SAND
23	CLAY SAND
24	CLAY SAND
25	CLAY SAND
26	CLAY SAND
27	CLAY SAND
28	CLAY SAND
29	CLAY SAND
30	CLAY SAND
31	CLAY SAND
32	CLAY SAND
33	CLAY SAND
34	CLAY SAND
35	CLAY SAND
36	CLAY SAND
37	CLAY SAND
38	CLAY SAND
39	CLAY SAND
40	CLAY SAND
41	CLAY SAND
42	CLAY SAND
43	CLAY SAND
44	CLAY SAND
45	CLAY SAND
46	CLAY SAND
47	CLAY SAND
48	CLAY SAND
49	CLAY SAND
50	CLAY SAND
51	CLAY SAND
52	CLAY SAND
53	CLAY SAND
54	CLAY SAND
55	CLAY SAND
56	CLAY SAND
57	CLAY SAND
58	CLAY SAND
59	CLAY SAND
60	CLAY SAND
61	CLAY SAND
62	CLAY SAND
63	CLAY SAND
64	CLAY SAND
65	CLAY SAND
66	CLAY SAND
67	CLAY SAND
68	CLAY SAND
69	CLAY SAND
70	CLAY SAND
71	CLAY SAND
72	CLAY SAND
73	CLAY SAND
74	CLAY SAND
75	CLAY SAND
76	CLAY SAND
77	CLAY SAND
78	CLAY SAND
79	CLAY SAND
80	CLAY SAND
81	CLAY SAND
82	CLAY SAND
83	CLAY SAND
84	CLAY SAND
85	CLAY SAND
86	CLAY SAND
87	CLAY SAND
88	CLAY SAND
89	CLAY SAND
90	CLAY SAND
91	CLAY SAND
92	CLAY SAND
93	CLAY SAND
94	CLAY SAND
95	CLAY SAND
96	CLAY SAND
97	CLAY SAND
98	CLAY SAND
99	CLAY SAND
100	CLAY SAND

NOTE:-
ALL ELEVATIONS REFER TO
USGS DATUM.
SOIL BORING LOCATIONS
INDICATED THUS



Scale - 1" = 100'



TYPICAL LOT LAYOUT

Handwritten notes:
leave
will be at
the
one
Mr. F. L. Brown
1981-5-29
Michigan
1981-5-29
Michigan
1981-5-29
Michigan

PART OF THE SOUTHEAST FRACTIONAL QUARTER, SECTION 1, T.8 S., R.15 W., ONTWA TOWNSHIP, CASS COUNTY, MICHIGAN			
H.D. PEIRCE AND ASSOCIATES, INC.			
126 NORTH DISBROW STREET CASSOPOLIS, MICHIGAN 49031			
DATE	REVISION	BY	DATE
12/28/80	DESIGN WAS IN ERROR	HP	OCT, 1980
12/28/80	ADDED M.D. TEST PIT	HP	
2/18/81	ADDED GAS LINE	HP	
			34-111 C-80047

CHRISTIANNALAKE LODGE

S.E. Corner Section 1, T.8 S., R.15 W.